



The museum houses a modest but important collection of books, including hymn books, Bibles and assorted historical volumes. As an adjunct to Rosthern Junior College, the museum highlights the history of the school; yearbooks and other memorabilia of the school and its personnel over the years are on display.



### While in Rosthern:

- Enjoy the Valley Regional Park with its 18-hole golf course, camping and playgrounds,
- Take a dip at the Valley Aquatic Centre,
- Visit the Station Arts Centre with its art displays, choral and drama presentations and tea room,
- Take time to shop in Rosthern's bustling business centre,
- Visit the numerous, friendly churches,
- Drop in at the Tourist Information Centre at the junction of Highways 11 and 312 to learn about the many historical sights surrounding Rosthern.

For tours and off-hour visits to the museum, call Ed (232-5130); George (232-4275); Sylvia (223-4324) or Ben (232-4730).

Admission for adults is \$2.00 and for children, 50 cents. RJC students are admitted free of charge.

# **MENNONITE HERITAGE MUSEUM**

Rosthern, Saskatchewan

Corner of Fifth Street & Sixth Avenue

Hours:

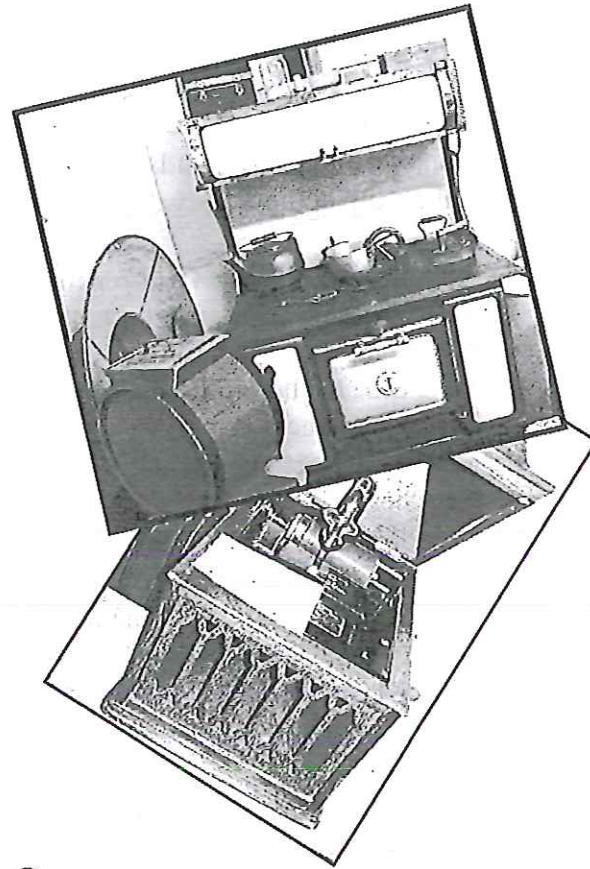
Saturdays – 10:30-4:30

Sundays – 2:00-5:00

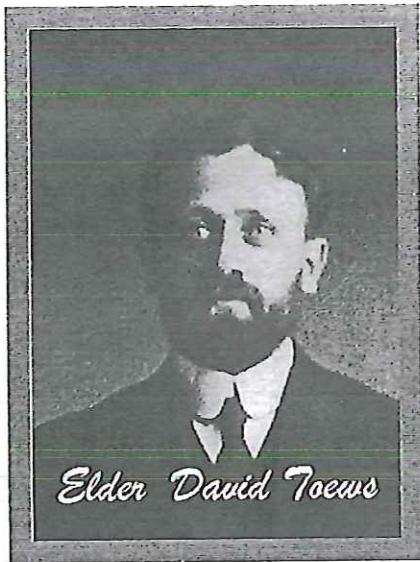
(See below for special arrangements for viewing.)



The Mennonite Heritage Museum is housed in the former German-English Academy building on the campus of Rosthern Junior College. The structure was erected in 1910 and served as classrooms and residence until it was turned over to a museum board in 1963. Many dedicated volunteers have maintained the museum and welcomed visitors over the decades.



Rosthern is at the centre of an historical part of Saskatchewan. Located near reconstructed Fort Carlton fur trading post, the preserved farm site of world-wheat champion Seager Wheeler and the Batoche battlefield, the museum seeks to reflect an auspicious local history.



On display are items from a jeweler's lathe to an ice cream maker, the everyday tools of the pioneers settling in the area. Seven rooms recreate the material and spiritual history of Mennonite settlement from the "general store" to the paraphernalia of home, to the daily toil in field and garden, church and school.

